

Loewe bild 1



LOEWE.

The number 1. Good design is both innovative and aesthetically pleasing. Loewe bild 1 is timelessly beautiful and designed with painstaking attention to detail. Carefully selected materials and skilled craftsmanship meet modern design in a stylish, elegant and minimalist look.

Design

Design highlights: with its frameless screen and discreetly integrated speaker system, Loewe bild 1 is a vision of lightness and elegance. Viewed from the front, the speakers are concealed from sight. Sound is projected from the rear. Loewe bild 1 – a style statement that will blend harmoniously in any living environment.

Image quality

Loewe bild 1.65 and bild 1.55 with an Ultra High Definition display and Edge-LED backlighting for crystal-clear details, perfect contrast and brilliant colours – even in fast moving scenes. Loewe bild 1.32 and bild 1.40 are available with a compelling Full HD display for an ideal second television in a study or bedroom.

Dual Channel technology

Loewe bild 1.65 and bild 1.55 with Dual Channel technology. Record one programme while watching another at the same time. It couldn't be easier. Simply connect an external hard drive, for example the Loewe DR+ Feature Disk, to a USB port and start recording. You can even briefly pause live TV, just press the pause button and then when convenient continue watching again where you left off.

Operation

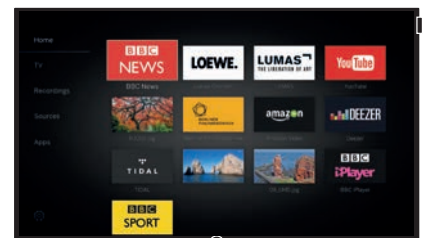
The clearly structured user interface is a joy to use. Your choice of TV channels, recordings, apps or other external sources can be easily stored and arranged on your home screen. Tidal opens up access to over 40 million music tracks. Films and series are available in online video libraries such as Amazon Video, while the most popular internet videos can be found on YouTube.

Sound

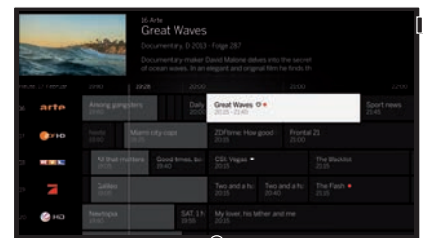
Tidal has the perfect music to match your changing moods. This integrated app provides an online music store to stream tracks directly to your television. For the ultimate in entertainment, add the compact and yet powerful Loewe klang 1 speakers and klang 1 subwoofer. Designed to create a seamless audio visual system, fully integrated with the TV, easy to use and with an extraordinary sound.

With additional options: you can enjoy the rich sound of TV and films wirelessly on Bluetooth headphones. You can also use Bluetooth to stream music from your smartphone directly to the television. Bluetooth can be easily activated with the optional DR+ Feature Disk or Feature Stick.

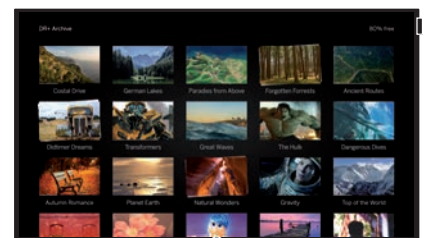
Loewe os – operating system



The redesigned home screen makes it even easier to access your favourite channels, connected devices and recordings.



The beautifully simplified EPG design allows you to see what's on TV and to set recordings with ease.



The new grid structure will help you locate recordings in your library even faster.



Convenient and attractive: the aluminium table stand can be rotated 20 degrees in either direction.



Quality you can feel: remote control with a high-quality aluminium surface.



klang 1 speaker. Flexible stand solutions. High-quality, seamless fabric. Textile-covered cables.

The minimalist TV design is beautifully complemented by the stunning modern floor stand with striking asymmetric base and the klang 1 sound system.



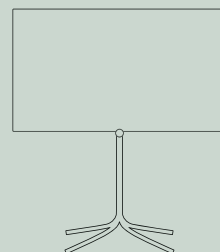
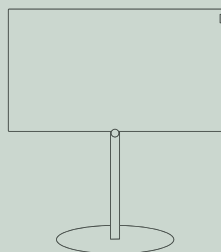
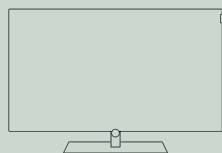
Highlights

55" / 65" Ultra HD: crystal-clear, precise picture with vibrant details
 Loewe operating system (os) – the intuitive new operating system
 Stereo sound system with 2 x 20 watts of music power

Can be expanded to a 2.1 sound system with klang 1 speakers and klang 1 subwoofer
 Optional: DR+ Feature Disk with 1 TB of storage capacity and a host of additional features, including Bluetooth headphone, Bluetooth music player, Multi Recording and more

Technical Information

	bild 1.32	bild 1.40	bild 1.55	bild 1.65
Screen resolution (in pixels)	Full HD (1920x1080)	Full HD (1920x1080)	Ultra HD (3840x2160)	Ultra HD (3840x2160)
Display technology	LCD with E-LED backlighting	LCD with E-LED backlighting	LCD with E-LED backlighting	LCD with E-LED backlighting
Screen diagonal (in cm / inch)	81 / 32	102 / 40	140 / 55	165 / 65
DVB-T2 / -C / -S2 / multi-standard (analogue) / Dual Channel	• / • / • / • / -	• / • / • / • / -	• / • / • / • / •	• / • / • / • / •
Output in watts (sine / music)	2 x 10 / 2 x 20	2 x 10 / 2 x 20	2 x 10 / 2 x 20	2 x 10 / 2 x 20
Acoustic speaker concept	2-way bass reflex	2-way bass reflex	2-way bass reflex	2-way bass reflex
USB recording	•	•	•	•
HDMI with HDCP	3 (1 x ARC)	3 (1 x ARC)	4 (4 x UHD / 1 x ARC)	4 (4 x UHD / 1 x ARC)
Integrated WLAN / LAN	• / •	• / •	• / •	• / •
EU energy efficiency class	A	A	B	A
Annual energy consumption (kWh)	55	85	221	229
Weight in kg	10.5	16.3	28.2	40.3
Colour	Black	Black	Black	Black
Dimensions TV (width / height / depth in cm)	W 73.4 / H 46.3 / D 5.4	W 91.3 / H 55.9 / D 5.4	W 123.5 / H 73.7 / D 4.9	W 145.1 / H 86.8 / D 6.4



Wall mount

65" / 55" / 40": WM 67, Black
 32": WM 68, Black
 Easy installation
 Depth (cm) incl. wall mount
 65": D 10.4
 55": D 9.3
 40": D 9.6
 32": D 8.0

Table solution, included with delivery

Aluminium, manual rotation (+/- 20°)
 Height / depth (cm) incl. table solution
 65": H 88.6 / D 29.0
 55": H 75.4 / D 27.0
 40": H 57.5 / D 25.0
 32": H 47.4 / D 20.0

Floor stand solution

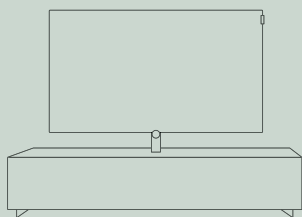
Floor Stand Plate, Light Grey
 Manual rotation (+/- 20°),
 concealed cable routing
 Height / depth (cm) incl. floor stand solution
 65": H 136.6 / D 56.0

Floor stand solution

Floor Stand Connect 32 – 40,
 Chrome Silver
 Manual rotation (+/- 45°),
 intelligent cable routing
 Height / depth (cm) incl. floor stand solution
 40": H 107.7 / D 48.7
 32": H 97.5 / D 48.7

Wall mount, flat mounting

WM Slim / VESA size 400 / 200,
 Chrome Silver
 Depth (cm) incl. wall mount
 65": D 7.9
 55": D 7.6
 40": D 7.2



Floor stand solution

Floor Stand Universal 32 – 55,
 Aluminium Silver
 Manual rotation (+/- 45°),
 concealed cable routing
 Height / depth (cm) incl. floor stand solution
 55": H 120.7 / D 50.2
 40": H 101.3 / D 50.2
 32": H 91.1 / T 50.2

Find more Set-up options and detailed technical information at www.loewe.tv

Wall mount, flexible

Wall Mount Isoflex 32 – 55, Aluminium
 Folds flat, can be pulled out, rotated and pivoted, intelligent cable routing
 Depth (cm) incl. wall mount
 55": D 10.6
 40": D 11.0

Loewe | Spectral Rack

From 40": Different colours and sizes.
 Available to match Loewe TVs, sound system and equipment
 Rack dimensions (without TV)
 Height / depth (cm): H 36.8 / D 48.2
 Width (cm): 110, 165 or 221